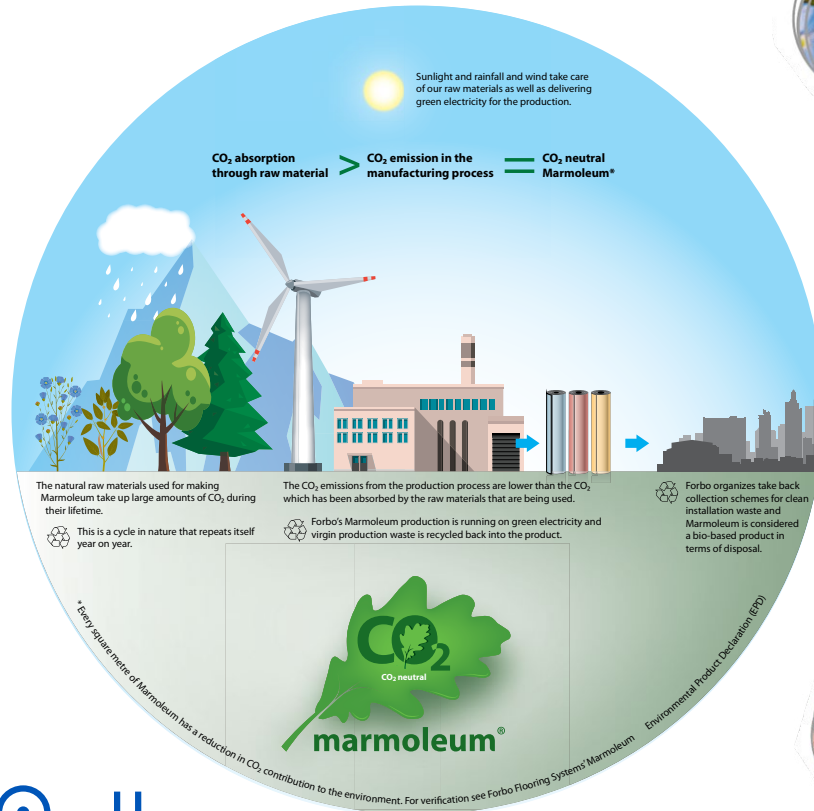


New **marmoleum**® marbled has arrived!



Marmoleum. CO₂ neutral naturally

The living plants from which the raw material for making Marmoleum is taken, absorb a considerable amount of CO₂ from the atmosphere during their lifetime. When this is set against the energy that is used to manufacture Marmoleum, the two processes even out to zero. Marmoleum is a CO₂ neutral material!



FLOORING SYSTEMS

creating better environments

PLANTING TREES THROUGH CO₂ NEUTRAL MARMOLEUM - FAQ

How is Marmoleum manufactured CO₂ neutral WITHOUT off-setting?

Marmoleum is produced CO₂ neutral thanks to the growing phase of its natural ingredients, most of which, are harvested as annual crops.

Flax plants, provide the linseed oil, jute used for the carrier on which linoleum is calendared and wood flour obtained from the left-over material of certified production forestry, all capture and absorb CO₂. The CO₂ absorbed, outweighs the energy used to produce the material. This is unique and the reason why off-setting or buying carbon credits is NOT required. The UL independent third party EPD provides further information.

How does every m² of Marmoleum contribute to planting native trees and landscape regeneration in Australia?

Every square metre of Marmoleum flooring installed directly contributes to planting native trees and shrubs in Australia. The trees are professionally planted and nurtured; they will be monitored for the first 5 years of their life to ensure their survival.

What does the CNCF do?

Carbon Neutral Charitable Fund use funds raised through donations to plant native trees on degraded land in Australia. Their reforestation projects sequester carbon whilst helping to restore the landscape and conserve natural biodiverse regions in Australia.

What do the CNCF plant?

CNCF restores degraded land in Australia back to its natural state by planting native endemic species of trees and shrubs. Seeds are collected and harvested locally to ensure plantings support the natural biodiversity of the local area.

Who will manage the trees and make sure everything is ok?

Every project issues an independent monitoring report annually for the first 5 years, to track health and survival of the trees. Monitoring reports will be posted on the Carbon Neutral Charitable Fund website and blog.

To find out more visit: www.forbo-flooring.com.au/cnfc



Forbo Flooring Systems Australia has partnered with Carbon Neutral Charitable Fund to plant native Australian trees and shrubs to help restore Australia's biodiversity.

CarbonNeutral
CHARITABLE FUND
we plant trees for the planet